



Healthy Story LLP
27 Old Gloucester Street, London, WC1N 3AX, United Kingdom
+44 800 048 5030 info@zdravaprica.com

Certificate of Analysis Sheet

Organic Common Sage Essential Oil

(*Salvia officinalis*)

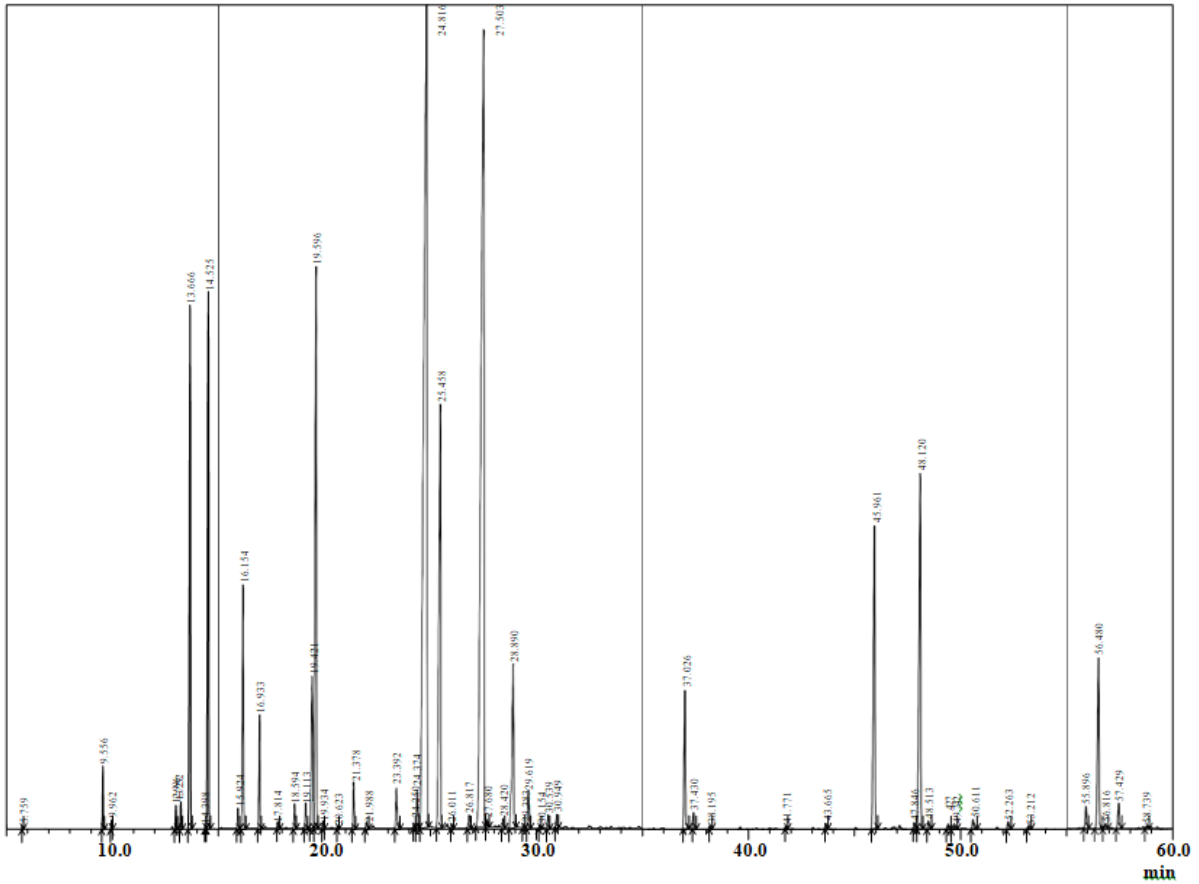
Batch number: **110322-1** Origin: **Bulgaria**

Analyzed : 8/9/2021 8:13:21 PM
Sample Type : Essential Oil

Sample Name : Salvia Officinalis
Sample ID : Pv090821H
Injection Vol. : 1.00

| R.Time | Name | Peak Report TIC | Area% |
|--------|---|-----------------|--------|
| 5.759 | 1-Butanol, 3-methyl- | | 0.018 |
| 9.556 | cis-Salvene | | 0.453 |
| 9.962 | cis-Salvene | | 0.068 |
| 12.996 | Tricyclene [Rt 21.24 AI921] | | 0.209 |
| 13.232 | Thujene <alpha-> | | 0.240 |
| 13.666 | Pinene <alpha>[RT22.163, AI 939] | | 5.289 |
| 14.398 | Fenchene <alpha> | | 0.021 |
| 14.525 | Camphene [RT 23.475, AI 954] | | 5.693 |
| 15.924 | Sabinene | | 0.196 |
| 16.154 | Pinene <beta-> | | 2.435 |
| 16.933 | Myrcene | | 1.087 |
| 17.814 | Phellandrene <alpha-> | | 0.064 |
| 18.594 | Terpinene <alpha->[RT 28.853, AI 1017] | | 0.243 |
| 19.113 | Cymene <para-> | | 0.279 |
| 19.421 | Limonene | | 2.209 |
| 19.596 | 1,8-cineole | | 6.952 |
| 19.934 | Ocimene <Z-beta> | | 0.071 |
| 20.623 | Ocimene <E-beta> | | 0.022 |
| 21.378 | Terpinene <gamma> | | 0.475 |
| 21.988 | 4-Thujanol | | 0.088 |
| 23.392 | Terpinolene | | 0.498 |
| 24.250 | Menth-2-en-1-ol <cis-p> [RT37.493, AI1118] | | 0.042 |
| 24.374 | Linalool | | 0.448 |
| 24.816 | Thujone <cis>[RT36.05, AI1101] | | 24.091 |
| 25.458 | Thujone <trans>[RT37.001, AI1112] | | 6.768 |
| 26.011 | .alpha.-Campholenaldehyde | | 0.032 |
| 26.817 | Bicyclo[3.1.0]hexan-3-ol, 4-methyl-1-(1-meth | | 0.154 |
| 27.503 | Camphor | | 21.297 |
| 27.680 | 3-Thujanol | | 0.082 |
| 28.420 | Pinocamphone <trans> [RT40.538, AI1158] | | 0.103 |
| 28.890 | Borneol | | 2.469 |
| 29.383 | Bicyclo[3.1.1]heptan-3-one, 2,6,6-trimethyl-, (| | 0.039 |
| 29.619 | Terpinen-4-ol [RT41.860, AI1177] | | 0.439 |
| 30.154 | Benzenemethanol, .alpha.,.alpha.,4-trimethyl- | | 0.028 |
| 30.539 | Terpineol <alpha> | | 0.152 |
| 30.949 | Myrtenol [RT43.11, AI1194] | | 0.141 |
| 37.026 | 2-Norbornanol, 1,3,3-trimethyl-, acetate, endo | | 1.764 |
| 37.430 | Sabinyl acetate <trans> [RT49.900, AI1289] | | 0.201 |
| 38.195 | Cyclohexene, 2-ethenyl-1,3,3-trimethyl- | | 0.040 |
| 41.771 | Eugenol | | 0.030 |
| 43.665 | Bourbonene <alpha> [RT56.836, AI1378] | | 0.067 |
| 45.961 | Caryophyllene | | 4.569 |
| 47.846 | Bicyclo[3.2.0]heptan-2-one, 5-fotmylmethyl-6 | | 0.076 |
| 48.120 | .alpha.-Humulene | | 5.420 |

| | | |
|--------|--|---------|
| 48.513 | Alloaromadendrene | 0.106 |
| 49.427 | Cadinene <gamma-> [RT65.496, AI1513] | 0.058 |
| 49.742 | Germacrene D | 0.048 |
| 50.611 | Viridiflorene (Ledene) | 0.149 |
| 52.263 | Cadinene <delta-> [RT65.784, AI1523] | 0.106 |
| 53.212 | 2,4-DIISOPROPENYL-1-METHYLCYCLOH | 0.042 |
| 55.896 | Caryophyllene oxide | 0.298 |
| 56.480 | Viridiflorol | 2.476 |
| 56.816 | Humulene <alpha> | 0.063 |
| 57.429 | Humulene epoxide II [RT71.580, AI1608] | 0.339 |
| 58.739 | Caryophyllene oxide | 0.035 |
| 66.736 | .beta.-Clovone | 0.119 |
| 68.055 | Humulene <alpha> [RT 61.826, RI 1452] | 0.104 |
| 73.534 | Phenanthrene, 7-ethenyl-1,2,3,4,4a,5,6,7,8,9,1 | 0.083 |
| 74.430 | Manool [RT93.080, AI2056] | 0.059 |
| 80.387 | Manool [RT93.080, AI2056] | 0.856 |
| | | 100.000 |



Typical Ranges of Main Components:

I