

# Certificate of Analysis

Contact us at:  
[info@zdravaprica.com](mailto:info@zdravaprica.com)



**Product Name:** Rosemary Essential Oil Organic  
**Batch No:** UI 45527

Analytical Details	Result
Odour	Herbal, Camphoraceous
Appearance	Colourless To Pale Yellow Liquid
Relative Density at 20°C	0.909
RI at 20°C	1.467

# Allergen Declaration

Contact us at:  
[info@zdravaprica.com](mailto:info@zdravaprica.com)



**Product Name:** Rosemary Oil - Organic

Ingredient	CAS	Concentration %
Linalool	78-70-6	0.58%
Methyl Eugenol	93-15-2	0.02%
Limonene	5989-27-5	2.25%
Alpha-Terpinene	99-86-5	0.48%
Gamma-Terpinene	99-85-4	0.86%

# IFRA Certificate

Contact us at:  
[info@zdravaprica.com](mailto:info@zdravaprica.com)



**Product Name:** Rosemary Essential Oil Organic

This Certificate assesses the conformity of the fragrance mixture with IFRA Standards and provides restrictions for use as necessary. It is based only on those materials subject to IFRA Standards for the toxicity endpoints described in each Standard.

This Certificate does therefore not replace a comprehensive Safety assessment of the fragrance mixture.

## COMPULSORY INFORMATION:

We certify that the above mixture is in compliance with the Standards of the INTERNATIONAL FRAGRANCE ASSOCIATION (IFRA), up to and including the 51<sup>st</sup> Amendment to the IFRA Code of Practice (published on June 30, 2023), provided it is used in the following categories at a maximum concentration level of:

Category	Maximum level of use
IFRA Category 1	2.1%
IFRA Category 2	7.5%
IFRA Category 3	2.1%
IFRA Category 4	55%
IFRA Category 5A	7.50%
IFRA Category 5B	1.05%
IFRA Category 5C	2.10%
IFRA Category 5D	0.345%
IFRA Category 6	5.0%
IFRA Category 7A	2.1%
IFRA Category 7B	2.1%
IFRA Category 8	0.345%
IFRA Category 9	8.5%
IFRA Category 10A	3.1%
IFRA Category 10B	10.5%
IFRA Category 11A	0.345%
IFRA Category 11B	0.345%
IFRA Category 12	100%

## ANNEX 1

Below is an extract of information provided by IFRA in relation to types of application present in each IFRA Category. Additional information about IFRA Categories can be found in the Guidance to IFRA Standards, issued by IFRA.

IFRA Category	Product Type
IFRA Category 1	Products applied to the lips: Lip products e.g. lipstick, lip balm; Childrens toys
IFRA Category 2	Products applied to the axillae: Deodorant and antiperspirant products of all types; Body sprays/mists
IFRA Category 3	Products applied to the face/body using fingertips: Eye products e.g. eye make-up, eye moisturizer; Facial make-up; Make-up remover; Nose pore strips; Wipes for face, neck, hands, body; Facial masks; Body and face paint
IFRA Category 4	Products related to fine fragrance: Hydroalcoholic and nonhydroalcoholic fine fragrance of all types e.g. Eau de Toilette, Parfum, Cologne, solid perfume, fragrancing cream, aftershaves of all types; Ingredients of perfume and fragrance mixtures for cosmetic kits; Scent pads; Scent strips
IFRA Category 5A	Body lotion products applied to the body using the hands (palms), primarily leave on: Foot care products e.g. creams, powders; Insect repellent for application to the skin; All powders and talc (excluding baby powders and talc)
IFRA Category 5B	Face moisturizer products applied to the face using the hands (palms), primarily leave on: Facial toner; Facial moisturizers and creams
IFRA Category 5C	Hand cream products applied to the hands using the hands (palms), primarily leave on: Hand cream; Nail care products including cuticle creams; Hand sanitizers
IFRA Category 5D	Baby creams, baby oils and baby talc: Baby cream/lotion, baby oil, baby powders and talc
IFRA Category 6	Products with oral and lip exposure: Toothpaste; Mouthwash, including breath sprays; Toothpowder, strips, mouthwash Tablets
IFRA Category 7A	Rinse-off products applied to the hair with some hand contact: Hair permanent or other hair chemical treatments (rinse-off) e.g. relaxers, including rinse-off hair dyes
IFRA Category 7B	Leave-on products applied to the hair with some hand contact: Hair sprays of all types e.g. pumps, aerosol sprays; Hair styling aids non sprays e.g. mousse, leave- on conditioners; Hair permanent or other hair chemical treatments (leave-on) e.g. relaxers, including leave-on hair dyes; Shampoo - Dry (waterless shampoo); Hair deodorizer
IFRA Category 8	Products with significant anogenital exposure: Intimate wipes; Tampons; Baby wipes; Toilet paper (wet)
IFRA Category 9	Products with body and hand exposure, primarily rinse off: Bar soap; Liquid soap; Shampoo of all type; Conditioner (rinse-off); Body washes and shower gels of all types; Baby wash, bath, shampoo; Bath gels, foams, mousses, salts, oils and other products added to bathwater; Cleanser for face (rinse-off); Shaving creams of all types e.g. stick, gels, foams; All depilatories (including facial) and waxes for mechanical hair removal; Foot care products (feet are placed in a bath for soaking); Shampoos for pets

IFRA Category 10A	Household care excluding aerosol / spray products: Hand wash laundry detergent; Laundry pre-treatment of all types e.g. paste, sprays, sticks; Machine laundry detergents with skin contact e.g. liquids, powders; Fabric softeners of all types including fabric softener sheets; Ironing water; Hand dishwashing detergent; Hard surface cleaners of all types e.g. bathroom, kitchen cleansers, furniture polish; Toilet seat wipes; Household cleaning products, other types including fabric cleaners, carpet cleaners, furniture polishes sprays and wipes, stain removers, treatment products for textiles e.g. starch sprays; Floor wax; Dry cleaning kits; Fragranced oil for lamp ring, reed diffusers, pot-pourri, liquid refills for air fresheners (non-cartridge systems), etc.
IFRA Category 10B	Household aerosol/spray products: Animal sprays applied to animals; Air freshener sprays, manual, including aerosol and pump; Aerosol/spray insecticides
IFRA Category 11A	Products with intended skin contact but minimal transfer of fragrance to skin from inert substrate without UV exposure: Feminine hygiene conventional pads, liners, interlabial pads; Diapers (baby and adult); Adult incontinence pant, pad; Toilet paper (dry)
IFRA Category 11B	Products with intended skin contact but minimal transfer of fragrance to skin from inert substrate with potential UV exposure: Tights with moisturizers; Scented socks, gloves; Facial tissues (dry tissues); Napkins; Paper towels; Wheat bags; Facial masks (paper/protective) e.g. surgical masks not used as medical device; Fertilizers, solid (pellet or powder)
IFRA Category 12	Products not intended for direct skin contact, minimal or insignificant transfer to skin: Candles of all types ; Laundry detergents for machine wash with minimal skin contact (e.g. Liquid tabs, pods); Automated air fresheners and fragrancing of all types e.g. concentrated aerosol with metered doses, plugins, electrical, incense, liquid refills (cartridge); Air delivery systems; Cat litter; Cell phone cases; Deodorizers/maskers not intended for skin contact e.g. fabric drying machine deodorizers, carpet powders; Fuels; Insecticides e.g. mosquito coil, paper, electrical, for clothing, excluding aerosols/sprays; Joss sticks or incense sticks; Dishwash detergent and deodorizers - for machine wash; Olfactive board games; Paints; Plastic articles (excluding toys); Scratch and sniff; Scent pack; Scent delivery system (using dry air technology); Shoe polishes; Rim blocks (Toilet)

# SAFETY DATA SHEET

(In compliance with EU regulation 1907/2006 and its adaptations)

## ROSEMARY ESSENTIAL OIL – ORGANIC

### Identification of the substance/ mixture and of the company / undertaking

#### 1.1 Product identifier

**INCI NAME:** Rosmarinus officinalis leaf oil  
**COMMERCIAL NAME:** Rosemary essential oil, cineole type, organic  
**CAS:** 84604-14-8  
**EC:** 283-291-9

Processes used for the manufacture of the substance:

Water steam distillation of organically grown flowering tops of *Rosmarinus officinalis* L. and subsequent separation of the water from the essential oil. The subsequent separation is a spontaneous physical process, which normally takes place in a separator (Florentine flask) enabling an easy isolation of the separated oil.

#### 1.2 Relevant identified uses of the substances or mixture and uses advised against

Cosmetic, flavour and fragrance - Do not use during pregnancy or breastfeeding, do not use in children younger than 30 months

#### 1.3 Details on the supplier of the safety data sheet

Healthy Story LLP  
27 Old Gloucester Street  
London  
WC1N 3AX  
United Kingdom

info@zdravaprica.com  
+44 800 048 5030

## 2. Hazards identification

### 2.1 Classification of the substance or mixture

Flam. Liq.3, Asp Tox 1, Skin. Irrit. 2, Skin Sens. 1, Eye Irrit. 2, STOT SE 2, Aquatic Chronic 2

### 2.2 Label elements

**Signal Word:** Danger  
**Hazard Statement:** H226: Flammable liquids, Hazard Category 3  
H304: Aspiration Hazard, Hazard Category 1  
H315: Skin corrosion/ irritation, Hazard Category 2  
H317: Sensitisation – SKIN, Hazard Category 1  
H319: Serious eye damage/eye irritation, Hazard Category 2  
H371: May cause damage to organs, (oral), Hazard Category 2  
H411: Toxic to the aquatic environment – Chronic Hazard Category 2

**Precautionary statement prevention:** P210, P233, P240, P241, P242, P243, P260, P261, P264, P270, P272, P273, P280

**Precautionary statement response:** P301 + P310, P302 + P352, P303+P361+P353, P305 + P351 + P338, P309 + P311, P331, P332 + P313, P333 + P313, P337 + P313, P362, P363, P370+P378, P391

**Precautionary statement Storage:** P403 + P235, P405 **Precautionary statement disposal:** P501



### 2.3 Other hazards

Allergens: Limonene, Linalool; CMR: Methyl eugenol

## 3 Composition/ Information on ingredients:

### 3.1 Substance:

Natural Complex Substance (NCS), 100% pure and natural

**Name: Alpha-Pinene/pin-2(3)-ene; IUPAC Names: 2,6,6-trimethylbicyclo[3.1.1]hept-2-ene; 5 to 16%**

SMILES: CC1=CCC2CC1C2(C)C

Molecular Formula: C<sub>10</sub> H<sub>16</sub>



EC number: 201-291-9

CAS number: 80-56-8

Signal word: Danger

Flam. Liq. 3, Acute Tox. 4, Asp. Tox. 1, Skin Irrit. 2, Skin Sens. 1, Aquatic Acute 1, Aquatic Chronic 1 H226, H302, H304, H315, H317, H400, H410

P210, P233, P240, P241, P242, P243, P264, P261, P271, P272, P273, P280

P301 + P310, P302 + P352, P303 + P361 + P353, P304 + P340, P312, P333 + P313, P331, P362, P363,

P370 + P378, P391

P403 + P235, P405, P501



**Name: Camphene; IUPAC name: 2,2-diméthyl-3-méthylène-bicyclo[2,2,1]heptane; 0 to 10%**

SMILES: CC1(C2CCC(C2)C1=C)C

Molecular formula: C<sub>10</sub> H<sub>16</sub>



EC number: 201-234-8

CAS number: 79-92-5

Signal word: Warning

Flam solid 2, Eye Irrit. 2, Aquatic Chronic 1

H228, H319, H410

P210, P240, P241, P264, P273, P280

P305 + P351 + P338, P337 + P313, P370 + P378, P391

P501

**Names:  $\beta$ -Pinene; IUPAC name: 7,7-dimethyl-4-methylidenebicyclo[3.1.1]heptanes; 0 to 10%**

SMILES: CC1(C2CCC(=C)C1C2)C

Molecular Formula: C<sub>10</sub> H<sub>16</sub>



EC number: 204-872-5

CAS number: 127-91-3

Signal word: Danger

Flam. Liq. 3, Asp. Tox. 1, Skin Irrit. 2, Skin Sens. 1

H226, H304, H315, H317

P210, P233, P240, P241, P242, P243, P264, P261, P272, P280

P301 + P310, P302 + P352, P303 + P361 + P353, P333 + P313, P331, P362, P363, P370 + P378

P405

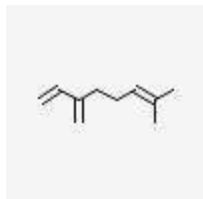
P501



**Name:  $\beta$ -Myrcene; IUPAC name: 7-Methyl-3-methylene-1,6-octadiene; < 5%**

SMILES: CC(=CCCC(=C)C=C)C

Molecular formula: C<sub>10</sub> H<sub>16</sub>



EC number: 204-622-5

CAS number: 123-35-3

Signal word: Danger

Flam. Liq. 3, Asp. Tox. 1, Skin. Irrit. 2, Skin Sens. 1, Eye Irrit. 2, Aquatic Chronic

1 H226, H304, H315, H317, H319, H410

P210, P233, P240, P241, P242, P243, P261, P264, P272, P273, P280

P301 + P310, P302 + P352, P303 + P361 + P353, P305 + P351 + P338, P321, P331, P333 + P313, P337 +

P313, P362, P363, P370 + P378, P391

P403 + P235, P405

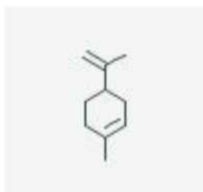
P501



**Name: D-Limonene; IUPAC name: (4R)-1-methyl-4-(prop-1-en-2-yl)cyclohex-1-ene; 0 to 5%**

SMILES: CC1=CCC(CC1)C(=C)C

Molecular Formula: C<sub>10</sub> H<sub>16</sub>



EC numbers: 227-813-5

CAS numbers: 5989-27-5

Signal word: Warning

Flam Liq. 3, Asp. Tox. 1, Skin Irrit. 2, Skin Sens. 1, Aquatic Acute 1, Aquatic Chronic 3 H226, H304, H315, H317, H400, H412

P210, P233, P240, P241, P242, P243, P261, P264, P273, P280

P301 + P310, P302 + P352, P303 + P361 + P353, P331, P333 + P313, P362, P363, P370 + P378, P391

P403 + P233, P403 + P235, P405

P501



**Name: 1,8-Cineole (Eucalyptol); IUPAC name: 4,7,7-trimethyl-8-oxabicyclo[2.2.2]octane; 35 to 55%**

SMILES: CC1(C2CCC(O1)(CC2)C)C

Molecular formula: C<sub>10</sub> H<sub>18</sub> O



EC number: 207-431-5

CAS number: 470-82-6

Signal words: Warning

Flam. Liq. 3, Eye Irrit. 2

H226, H319

P210, P233, P240, P241, P242, P243, P264, P280

P303 + P361 + P353, P370 + P378, P305 + P351 + P338, P337 + P313

P403 + P235

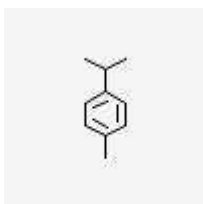
P501



**Name: p-Cymene; IUPAC name: 1-methyl-4-propan-2-ylbenzene; < 5%**

SMILES: CC1=CC=C(C(C=C1)C(C)C

Molecular Formula: C<sub>10</sub> H<sub>14</sub>



EC number: 202-796-7

CAS number: 99-87-6

Signal word: Danger

Flam. Liq. 3, Asp. Tox. 1, Skin Irrit. 2, Eye Irrit. 2

H226, H304, H315, H319

P210, P233, P240, P241, P242, P243, P264, P280

P301 + P310, P302 + P352, P303 + P361 + P353, P305 + P351 + P338, P331, P321, P332 + P313, P337 + P313, P362, P370 + P378

P403 + P235, P405

P501



**Name: Bornan-2-one (Camphor); IUPAC name: 1,7,7-trimethylbicyclo[2.2.1]heptan-2-one; 5 to 15%**

SMILES: CC1(C2CCC1(C(=O)C2)C)C

Molecular Formula: C<sub>10</sub> H<sub>16</sub> O



EC number: 200-945-0

CAS number: 76-22-2

Signal word: Warning

Flam. Sol. 2, Acute Tox. 4 (oral), Acute Tox. 4 (inhalativ), Skin Sens. 1B, Eye Irrit. 1, STOT SE 2, Aquatic Chronic 2

H228, H302, H332, H317, H318, H371, H411

P210, P240, P241, P260, P261, P264, P270, P271, P272, P273, P280

P301 + P312, P302 + P352, P304 + P340, P305 + P351 + P338, P309 + P311, P310, P321, P330, P332 + P313, P363, P370 + P378, P391

P405

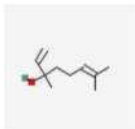
P501



**Name: Linalool; IUPAC name: 3,7-dimethylocta-1,6-dien-3-ol; < 5%**

SMILES: CC(=CCCC(C)(C=C)O)C

Molecular formula: C<sub>10</sub> H<sub>18</sub> O



EC number: 204-811-2

CAS number: 126-91-0

Signal word: Warning

Skin Sens. 1B

H317

P261, P272, P280

P302 + P352, P333 + P313, P321, P363

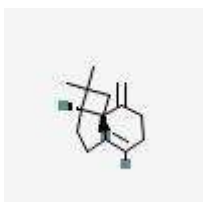
P501



**Name:  $\beta$ -Caryophyllene; IUPAC name: trans-(1R,9S)-4,11,11-trimethylbicyclo[7.2.0]undec-4-ene; 0 to 10%**

SMILES: CC1=CCCC(=C)C2CC(C2CC1)(C)C

Molecular Formula: C<sub>15</sub> H<sub>24</sub>



EC number: 201-746-1

CAS number: 87-44-5

Signal word: Danger

Asp. Tox. 1, Skin Sense. 1B, Aquatic Chronic 4

H304, H317, H413

P261, P272, P273, P280

P301 + P310, P302 + P352, P305 + P351 + P338, P321, P331, P333 + P313, P337 + P313, P363

P405

P501



**Name:**  $\alpha$ -Terpineol (p-ment-1-en-8-ol); **IUPAC name:** 2-(4-methyl-1-cyclohex-3-enyl)propan-2-ol; < 5%

SMILES: CC1=CCC(CC1)C(C)(C)O / CC(=C1CCC(CC1)(C)O)C

Molecular Formula: C<sub>10</sub> H<sub>18</sub> O



EC number: 202-680-6

CAS number: 98-55-5

Signal word: Warning

Skin Irrit. 2, Eye Irrit. 2

H315, H319

P264, P280

P302 + P352, P305 + P351 + P338, P321, P332 + P313, P337 + P313, P362



**Name:** Borneol, IUPAC name: (1R,2S,4R)-1,7,7-trimethylbicyclo[2.2.1]heptan-2-ol; <5%

SMILES: CC1(C2CCC1(C(C2)O)C)C

Molecular formula: C<sub>10</sub> H<sub>18</sub> O



EC number: 208-080-0

CAS number: 507-70-0

Signal word: Warning

Flam sol. 2

H228

P210, P240, P241, P280

P370 + P378



**Name: Methyleugenol; IUPAC name: 1,2-dimethoxy-4-prop-2-enylbenzene; < 0.5%**

SMILES: COC1=C(C=C(C=C1)CC=C)OC

Molecular formula: C<sub>11</sub> H<sub>14</sub> O<sub>2</sub>

EC number: 202-223-0

CAS number: 93-15-2

Signal word: Warning

Acute Tox. 4, Skin Sens. 1, Muta. 2, Carc. 2

H302, H317, H341, H351

P201, P202, P361, P264, P270, P272, P280, P281

P301 + P312, P302 + P352, P308 + P313, P321, P330, P333 + P313, P363

P405

P501



Contains no other ingredients that are classified according to the current state of knowledge and that contribute to the classification of the substance and that must therefore be mentioned in this section.

#### 4. First aid measures

##### 4.1. Description of first aid measures

**IN THE EVENT OF EXCESSIVE INHALATION:** remove the individual to fresh air and keep at rest. Obtain medical advice immediately.

**IN THE EVENT OF SKIN CONTACT:** wash with plenty of soap and water, take off contaminated clothing and wash before reuse. If skin irritation occurs get medical advice/ attention. If skin irritation or rash occurs get medical advice/ attention.

**IN THE EVENT OF EYE CONTACT:** rinse cautiously with water for several minutes. Remove contact lenses if present and easy to do. Continue rinsing. If eye irritation persists get medical advice/ attention.

**IN THE EVENT OF INGESTION:** rinse mouth with water and get medical advice. Do not induce vomiting unless directed by medical personnel. Seek medical attention immediately.

#### **4.2. Most important symptoms and effects, both acute and delayed**

The most important known symptoms and effects are described in the labeling of the product (Section 2) and / or in section 11. Further symptoms are possible.

#### **4.3. Indication of any immediate medical attention and special treatment needed**

Symptomatic treatment. No particular treatment necessary.

### **5. Firefighting measures**

#### **5.1 Extinguishing media**

**RECOMMENDED:** carbon dioxide, special liquids or dry powder extinguishers

**USABLE:** foam of halogen extinguishers

**INADVISABLE:** direct water jet

#### **5.2 Special hazards arising from the substance or the mixture**

May produce toxic gases (carbon oxides) upon burning.

#### **5.3 Advice for fire fighters**

Fire fighters should wear positive pressure self-contained breathing apparatus.

Closed containers may build up pressure under elevated temperatures. If possible, containers should be cooled with a water spray.

### **6. Accidental release measures**

#### **6.1 Personal precaution, protective equipment and emergency procedures**

Prevent contact with eyes and skin. Wear eye shields or protective clothing. Avoid inhalation of vapours

Keep away from open fire or other sources of ignition

#### **6.2 Environmental precautions**

Contain spilled material to avoid a possible contamination of the environment.

Avoid any discharge in the sewer system and in natural environment.

#### **6.3 Methods and material for containment and cleaning up**

Cover with an inert, non-combustible, inorganic absorbent material.

Sweep up and remove to an approved disposal container.

#### **6.4 Reference to other sections:**

And see section 8 and 13

### **7. Handling and storage**

#### **7.1 Precautions for safe handling**

To avoid fire hazards, products should not be heated with or exposed to open flames or other sources of ignition.

During the introduction of the ingredients into the final product, ingredients should be normally kept at relatively low temperatures.

Measures should be taken to prevent materials from being splashed into the eyes or the skin. This should include wearing eye shields and protective clothing. Maintain adequate air circulation in the working areas.

Smoking should not be permitted in areas where the product is handled.

Materials used for cleaning up spillages should be disposed of promptly, preferably by incineration as cases of spontaneous combustion of product soaked in rags have been reported.

## 7.2 Storage

Store in closed containers, away from heat sources, air or light and protected from extremes of temperature.

## 7.3 Specific end use

Comply with regulations and specifications of the product. No specific recommendations. Apply the rules of handling above.

## 8. Exposure controls/ Personal protection

### 8.1 Control parameters

Ventilation: provide adequate ventilation, use local exhaust fan if necessary

Occupational exposure limit values in accordance with Directive 98/24/EC: no data available

### 8.2 Exposure controls

Engineering measures Advice: Where appropriate, use closed systems to transfer and process this material. If appropriate, isolate mixing rooms and other areas where this material is used or openly handled. Maintain these areas under negative air pressure relative to the rest of the plant.

### Personal protective equipment

**Respiratory protection:** Use local exhaust ventilation around open tanks and other open sources of potential exposures in order to avoid excessive inhalation, including places where this material is openly weighed or measured. In addition, use general dilution ventilation of the work area to eliminate or reduce possible worker exposures. No respiratory protection is required during normal operations in a workplace where engineering controls such as adequate ventilation, etc. are sufficient.

If engineering controls and safe work practices are not sufficient, an approved, properly fitted respirator with organic vapour cartridges or canisters and particulate filters should be used:

a) while engineering controls and appropriate safe work practices and/or procedures are being implemented; or

b) during short term maintenance procedures when engineering controls are not in normal operation or are not sufficient; or

c) if normal operational workplace vapour concentration in the air is increased due to heat ;

d) during emergencies; or

e) if engineering controls and operational practices are not sufficient to reduce airborne concentrations below an established occupational exposure limit.

**Hand protection:** Avoid skin contact. Use chemically resistant gloves.

**Eye protection:** Use tight-fitting goggles, face shield or safety glasses with side shields if eye contact might occur.

**Hygiene measures:** To the extent deemed appropriate, use an experienced air sampling expert to identify and measure volatile chemicals that could be present in the workplace air to determine potential exposures and to ensure the continuing effectiveness of engineering controls and operational practices to minimize exposure.

## 9. Physical and chemical properties

### 9.1 Information on basic physical and chemical properties

#### (a) Appearance:

**Physical state:**

liquid

**Colour:**

very pale yellow

#### (b) Odour:

characteristic of cineol and camphor

#### (c) Odour threshold:

not determined

#### (d) pH:

not determined

#### (e) Melting point/freezing point:

not determined

#### (f) Initial boiling point and boiling range:

not determined

#### (g) Flash point:

+47°C

(h) Evaporation rate:	not determined
(i) Flammability (solid, gas):	not determined
(j) Upper/lower flammability or explosive limits:	not determined
(k) Vapour pressure:	0,8200mm/Hg at 25°C
(l) Vapour density:	not determined
m) Relative density:	+/- 0.914
(n) Solubility (ies):	insoluble in water, liposoluble
(o) Partition coefficient: n-octanol/water:	not determined
(p) Auto-ignition temperature:	not determined
(q) Decomposition temperature:	not determined
(r) Viscosity:	not determined
(s) Explosive properties:	not determined
(t) Oxidising properties:	not determined

## 9.2 Other information

No data available

## 10. Stability and reactivity

10.1 Reactivity:	No data available
10.2 Chemical stability:	No significant changes in the composition in time Respecting the storage conditions described in 7.2.
10.3 Possibility of hazardous reactions:	No data available
10.4 Conditions to avoid:	Excessive heat, open flames or other sources of ignition
10.5 Incompatible materials:	Avoid contact with strong acids, alkali or oxidizing agents.
10.6 Hazardous decomposition products:	None in normal use

## 11. Toxicological information

### Information on toxicological effects

(a) Acute toxicity:	No data available
(b) Skin corrosion/irritation:	No data available
(c) Serious eye damage/irritation:	No data available
(d) Respiratory or skin sensitisation:	No data available
(e) Germ cell mutagenicity:	No data available
(f) Carcinogenicity:	No data available
(g) Reproductive toxicity:	No data available
(h) STOT-single exposure:	No data available
(i) STOT-repeated exposure:	No data available
(j) Aspiration hazard:	Aspiration toxicity cannot be excluded
Information on likely routes of exposure:	No data available

**Symptoms related to the physical, chemical and toxicological characteristics:** No data available  
**Delayed and immediate effects as well as chronic effects from short and long-term exposure:** No data available

Interactive effects:	No data available
11.2 Other information on toxicological effects:	No data available

## 12. Ecological information

<b>12.1. Toxicity:</b>	Toxic to aquatic life with long lasting effects.
<b>12.2. Persistence and degradability:</b>	Readily biodegradable
<b>12.3. Bioaccumulative potential:</b>	No data available
<b>12.4. Mobility in soil:</b>	No data available
<b>12.5. Results of PBT and vPvB assessment:</b>	No data available
<b>12.6. Other adverse effects:</b>	Avoid release to the environment

## 13. Disposal considerations

### 13.1. Waste treatment methods:

Excessive quantities should not be permitted to enter drains, sewers or watercourses.  
Dispose of in accordance with local regulations.

**Contaminated packaging:** Empty containers should be taken to an approved waste handling site for recycling or disposal.

## 14. Transport information

<b>14.1 UN number:</b>	UN 1169
<b>14.2. UN proper shipping name:</b>	Extracts, aromatic, liquid, n.o.s. (Rosemary essential oil)
<b>14.3. Transport hazard class (es):</b>	3 (F1)
<b>14.4. Packing group:</b>	III
<b>Label:</b>	3+MP Toxic to the aquatic environment –Chronic Hazard Category 2; marine pollutant: yes
<b>14.5. Environmental hazards:</b>	EmS code: F-E, S-D
<b>14.6. Special precautions for user:</b>	Store in closed containers, away from heat sources, air or light and protected from extremes of temperature.
<b>14.7. Transport in bulk according to Annex II of MARPOL 73/78 and the IBC Code:</b>	Not concerned

## 15. Regulatory information

### 15.1 Safety, health and environmental regulations/legislation specific for the substance or mixture:

This SDS was written in accordance with Regulation (EC) No. 1907/2006 and its adaptations, modified by Regulation (EU) n°521/2019.

## 16. Other Information

This safety data sheet completes the specification sheet but does not constitute a guarantee of the properties of the product and is not a contractual legal report. The information is given in good faith on the basis of our best knowledge of the product. However, we cannot accept responsibility or liability for any consequences arising from its use.

We caution the users against the incurred possible risks when the product is used at other ends than the use for which it was initially planned.

It is the user's responsibility during handling, storage and product use to consult the main regulatory texts in force regarding workers and environment protection.

**Indication of changes:** New safety data sheet in accordance with EC 521/2019

### Legend to abbreviations and acronyms used:

EC: European Community

INCI: International Nomenclature of Cosmetic Ingredients  
CAS: Chemical Abstract Service  
EINECS: European Inventory of Existing Commercial Chemical Substance  
Irrit.: irritation  
Sens: sensitisation  
Tox.: toxicity  
pH: potential Hydrogen  
STOT: Specific Target Organ Toxicant  
PBT: persistent bio accumulative toxic chemical  
vPvB: very Persistent very Bio accumulative chemical  
UN: United Nations

## **Bibliography:**

### **List of relevant hazard statements, safety phrases and/or precautionary statements:**

H226: Flammable liquid and vapour.  
H302: Harmful if swallowed.  
H304: May be fatal if swallowed and enters airways.  
H315: Causes skin irritation.  
H317: May cause an allergic skin reaction.  
H319: Causes serious eye irritation.  
H335: May cause respiratory irritation.  
H371: May cause damage to organs  
H411: Toxic to aquatic life with long lasting effects.  
P210: Keep away from heat/sparks/open flames/hot surfaces. – No smoking.  
P233: Keep container tightly closed.  
P240: Ground/bond container and receiving equipment.  
P241: Use explosion-proof electrical/ventilating/lighting/.../ equipment.  
P242: Use only non-sparking tools.  
P243: Take precautionary measures against static discharge.  
P261: avoid breathing dust/ fume/ gas/ mist/ vapours/ spray.  
P264: wash hands thoroughly after handling  
P270: Do not eat, drink or smoke when using this product.  
P272: Contaminated work clothing should not be allowed out of the workplace.  
P273: avoid release to the environment  
P280: wear protective gloves/ protective clothing/ eye protection/ face protection  
P301 + P310: IF SWALLOWED: Immediately call a POISON CENTER or doctor/physician.  
P301 + P312: IF SWALLOWED: Call a POISON CENTER or doctor/physician if you feel unwell.  
P302 + P352: IF ON SKIN: wash with plenty of soap and water  
P303 + P361 + P353: IF ON SKIN (or hair): Remove/Take off immediately all contaminated clothing.  
Rinse skin with water/shower.  
P304 + P340: IF INHALED: Remove victim to fresh air and keep at rest in a position comfortable for breathing.  
P305 + P351 + P338: IF IN EYES: Rinse cautiously with water for several minutes. Remove contact lenses, if present and easy to do. Continue rinsing.  
P305 + P351 + P338: IF IN EYES; rinse cautiously with water for several minutes. Remove contact lenses, if present and easy to do. Continue rinsing.  
P312: Call a POISON CENTER or doctor/physician if you feel unwell.  
P321: specific treatment (see on this label)  
P330: Rinse mouth.  
P331: Do NOT induce vomiting. Wash contaminated clothing before reuse.  
P332 + P313: if skin irritation occurs: get medical advice/ attention  
P333 + P313: if skin irritation or rash occurs: get medical advice/ attention  
P337 + P313: if eye irritation persists: get medical advice/ attention  
P362: take off contaminated clothing and wash before reuse  
P363: Wash contaminated clothing before reuse.  
P370 + P378: In case of fire: Use ... for extinction.  
P391: Collect spillage.  
P403 + P233: Store in a well-ventilated place. Keep container tightly closed.  
P403 + P235: Store in a well-ventilated place. Keep cool.  
P405: Store locked up.  
P501: dispose of contents/ container in accordance with local/ regional/ national/ international regulation.